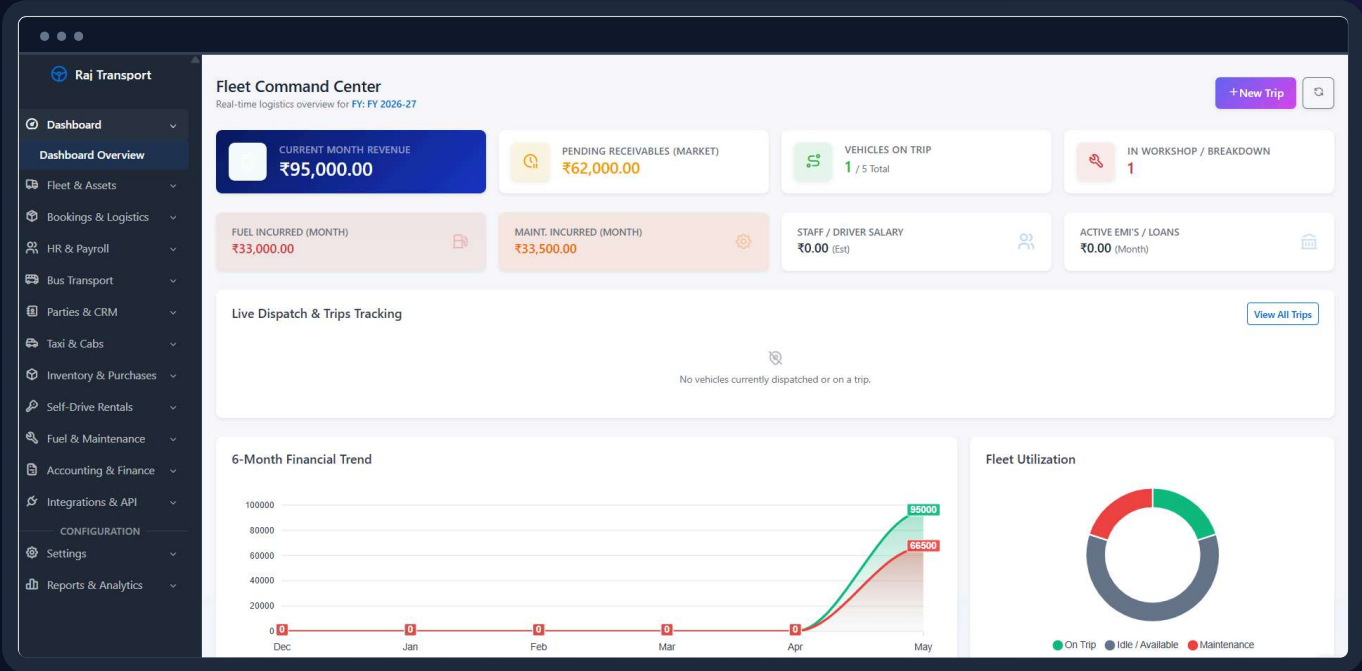


 THE NEXT GENERATION TRANSPORT ERP

# Command Your Entire Fleet From One Unified Dashboard.

Replace fragmented legacy tools with a single, synchronized platform for dispatch, telematics, maintenance, accounting, and driver settlements.



**100% Cloud Based**  
Access live logistics data from any device, anywhere. Zero local servers required.

**Bank-Grade Security**  
256-bit AES encryption ensuring absolute data isolation and privacy.

**API Driven Ecosystem**  
Natively connects with Tally Prime, Cashfree Payments, GPS Hardware, and FASTag.

# Zero-Leakage Financial Command.

Complete control over your transport cash flow, integrated directly with online gateways and Tally ERP.

ACCOUNTING & FINANCE  
Chart of Accounts (COA) + Create Ledger Account

TOTAL ASSETS (DR)  
**₹566,150.00**

TOTAL LIABILITIES & EQUITY (CR)  
**₹47,200.00**

TOTAL INCOME / REVENUE  
**₹63,000.00**

TOTAL EXPENSES  
**₹33,000.00**

Filter by Base Pillar

-- View All Pillars -- Render Report

ACCOUNT CODE & NAME	CLASSIFICATION (BASE & GROUP)	PARENT GROUPING	CURRENT BALANCE	ACTIONS
AST-01 Reliance Industries Debtor	Asset Sundry Debtors	- Master Level -	₹18,900.00	
AST-02 HDFC Current Bank	Asset Bank Balances	- Master Level -	₹547,250.00 <small>OP: ₹500,000.00</small>	
EXP-01 Fuel Expenses A/c	Expense Direct Expenses	- Master Level -	₹33,000.00	
INC-01 Freight Sales A/c	Income Revenue from Operations	- Master Level -	₹63,000.00	
LI-01 Tata Motors Credit	Liability	- Master Level -	₹17,300.00	

**Dynamic Freight Billing**

Handle complex B2B logistics. Dynamically calculate billing models based on Per Ton, Flat Rate, Per KM, or FCL/LTL configurations.

**E-Way & LR Generation**

Auto-generate compliant Lorry Receipts (LR/Bilty) with consignor/consignee mappings and instantly dispatch them via WhatsApp.

**Strict COA Accounting**

Maintain a strict double-entry Chart of Accounts. Every fuel receipt, advance, and freight bill automatically maps to your core ledger.

**Direct Tally Sync**

Eliminate manual dual entry. Push all sales invoices, vendor purchases, and payroll journal vouchers directly into your Tally Prime via XML API.

**Payment Gateways**

Natively integrated with Cashfree. Auto-dispatch payment links to corporate clients for overdue invoices and reconcile automatically.

**Advance & Balance Tracking**

Instantly map trip advances to driver accounts and track precise pending party balances across multiple branches.

# Real-Time GPS & Asset Tracking.

Stop guessing where your trucks are. Connect hardware APIs to pull live coordinates and eliminate fuel theft.

**FLEET OPERATIONS**  
Live Telemetry & Tracking ● Live Sync Active (15s)

**Fleet Status**

Search by Reg No...

- DL-01-AB-1234** No GPS Signal  
⊕ Ramesh Singh  
⊙ Updated: No Signal
- MH-04-XY-9876** No GPS Signal  
⊕ Suresh Kumar  
⊙ Updated: No Signal
- HR-26-ZZ-5555** No GPS Signal  
⊕ Vikram Driver  
⊙ Updated: No Signal
- UP-16-TR-1111** No GPS Signal  
⊕ Unassigned  
⊙ Updated: No Signal
- KA-01-RT-7777** No GPS Signal  
⊕ Unassigned  
⊙ Updated: No Signal

The map displays India with various states and cities labeled, including Quetta, Bahawalpur, Saharanpur, Meerut, Moradabad, Kathmandu, Sukkur, Faridabad, Aligarh, Jaipur, Agra, Kanpur, Prayagraj, Varanasi, Patna, Gaya, Dhanbad, Jamshedpur, Rajkot, Vadodara, Indore, Jabalpur, Bhopal, Nagpur, Amravati, Akola, Chandrapur, Bhiwandi, Mumbai, Nanded, and Cuttack. The map is powered by Leaflet and OSM contributors.



## Live Fleet Telemetry

Pull live GPS coordinates, speeds, and ignition statuses from your hardware directly into the ERP dashboard. Zero blind spots.



## Fuel Theft Detection

Integrate with fuel rod sensors. The system detects sudden volumetric drops and triggers instant alerts to prevent diesel siphoning.



## Geofence Automation

Draw polygons around client warehouses or depots. The system automatically marks a trip as 'Arrived' when the truck breaches the perimeter.



## Odometer Syncing

Automatically update vehicle odometers in the database from the GPS unit to trigger precise preventative maintenance alerts.



## Hardware Agnostic API

You are not locked in. Pull data from any standard GPS device (Teltonika, Wialon, Traccar) using our webhook push or API pull architecture.

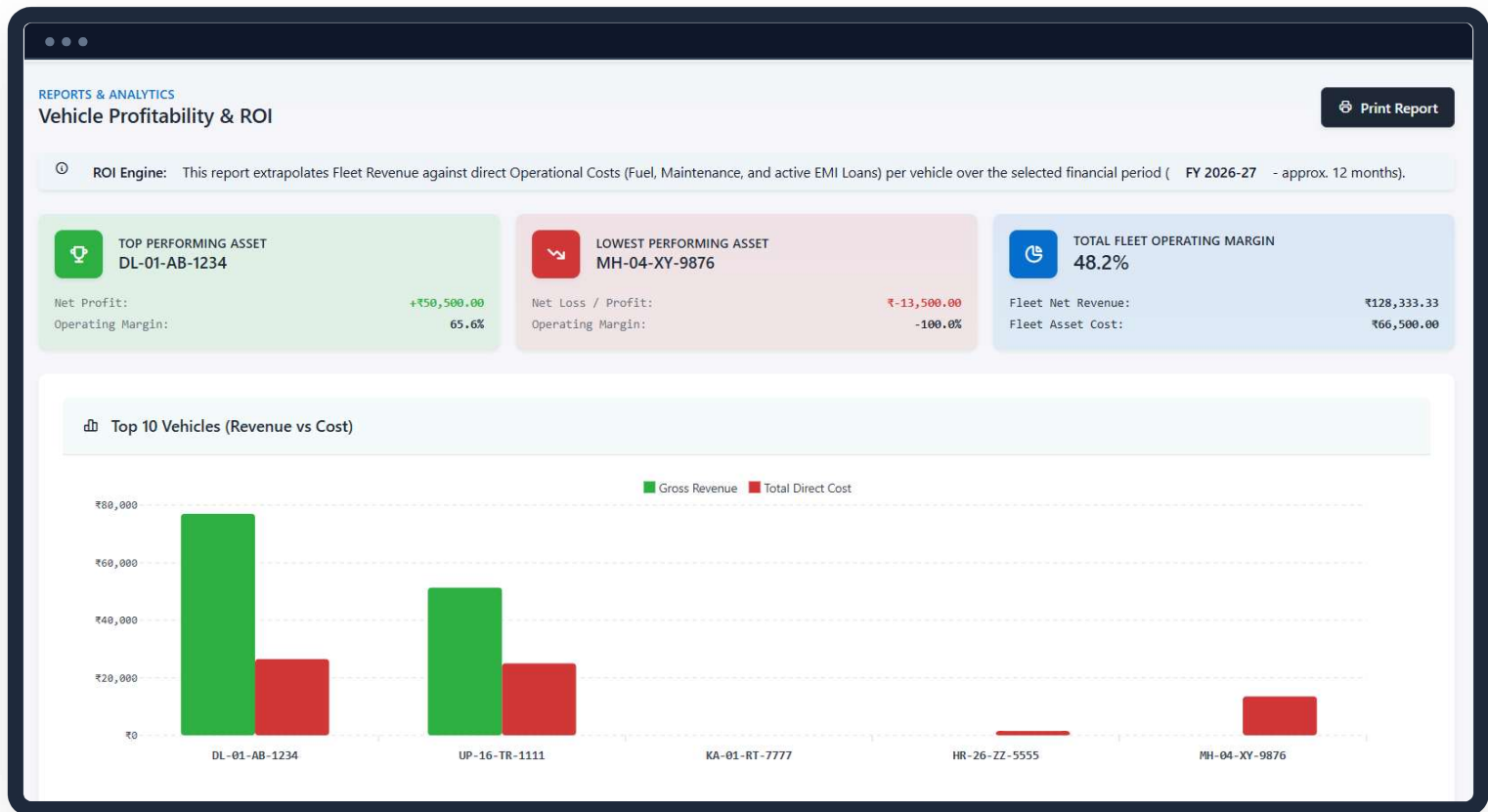


## Historical Route Playback

Review exact trip paths, unauthorized stops, and route deviations from months ago with our visual playback engine.

# Keep Your Fleet On The Road.

Predictive maintenance, spare parts inventory, and strict automated RTO compliance tracking.



## Predictive Maintenance

Sync GPS odometers to trigger automatic service reminders (e.g., Oil change at 15,000 KM) and generate digital workshop job cards.



## Tyre & Component Tracking

Log specific tyre serial numbers. Know exactly how many kilometers a tyre ran before rotating it or sending it to the retread pile.



## Automated RTO Compliance

Update RC, Permits, Fitness, and Insurance info. The system highlights exactly which vehicle is expiring within 30 days, avoiding RTO challans.



## Digital Job Cards & Inventory

Mechanics request parts from the warehouse. The system calculates moving average costs for precise workshop billing and inventory tracking.



## Fuel & Mileage Logs

Drivers log fill-ups. The system cross-references GPS odometers to flag vehicles operating below expected KMPL baselines.



## Document Vault

Securely store and retrieve critical vehicle and driver KYC documents directly from the cloud whenever requested by authorities.

# Frictionless Driver Settlements.

Resolve complex trip ledgers in one click. Manage yard staff attendance and fleet payroll easily.

HR & PAYROLL  
Payroll Generation Engine

April 2026 Run Payroll Engine

TOTAL NET PAYABLE  
₹83,500.00

TOTAL SALARIES PAID  
₹39,000.00

PENDING LIABILITIES  
₹44,500.00

-- Filter by Status --

EMPLOYEE DETAILS	EARNINGS (₹)	DEDUCTIONS (₹)	NET & PAID (₹)	STATUS	ACTIONS
<b>EMP-003</b> <b>Abdul Mechanic</b> Mechanic   Head Office	Basic/Earned: ₹30,000.00 Allowances: + ₹0.00	Deductions/EMI: - ₹0.00	Net: ₹30,000.00 Paid: ₹0.00	Unpaid	
<b>EMP-001</b> <b>Ramesh Singh</b> Driver   Head Office	Basic/Earned: ₹25,000.00 Allowances: + ₹5,000.00	Deductions/EMI: - ₹1,000.00	Net: ₹29,000.00 Paid: ₹29,000.00	Paid	
<b>EMP-002</b> <b>Suresh Kumar</b> Driver   Head Office	Basic/Earned: ₹22,000.00 Allowances: + ₹3,000.00	Deductions/EMI: - ₹500.00	Net: ₹24,500.00 Paid: ₹10,000.00	Partial	



## Trip Batta & Reimbursements

Resolve complex trip ledgers instantly. Calculate driver allowances (Batta), adjust trip advances, reimburse tolls, and view exact net payables.



## Biometric Yard Attendance

Integrate physical face/fingerprint scanners at your warehouse. Process raw logs instantly to mark yard staff presence and generate salary slips.



## Loan & Fine Deductions

Provide emergency advances to drivers. Automatically deduct fixed EMI chunks from their monthly payroll or trip until the balance clears.



## Automated Fleet Payroll

Salaries are auto-calculated at month-end based on biometric presence, approved leave requests, trip counts, and allowance components.



## Leave Management

Staff apply for leaves via the app; admins approve/reject with a single click. The system automatically tracks leave balances and LWP.



## Driver KYC & Licensing

Maintain critical driver data including License expiry dates, badge numbers, blood groups, and police background verification records.

# Not Just For Heavy Trucks.

Tailored operational modules for Corporate Cabs and Intercity Buses, powered by an open API ecosystem.

TAXI & CABS  
Corporate Billing & Invoices Generate New Invoice

TOTAL GROSS BILLED ₹12,600.00

REVENUE COLLECTED ₹0.00

PENDING OUTSTANDING ₹12,600.00

INVOICE DETAILS	CORPORATE CLIENT	BILLING MATH	NET PAYABLE / STATUS	ACTIONS
<b>TAXI-INV-001</b> Billed: 16 May, 2026 Due: 30 May, 2026	<b>Infosys Transport Desk</b> 2 Duty Slips Attached	Taxable: ₹12,000.00 GST (0.00%): + ₹0.00	Net: ₹12,600.00 Unpaid	 



## Corporate Taxi Billing

Generate specialized Duty Slips tracking Opening/Closing KMs and Waiting Hours. Consolidate into a single B2B Tax Invoice.



## Intercity Bus Transit

Manage Route Configurations and Stop Sequencing. Conductors log daily ticket collections directly into the ledger.



## WhatsApp Automation

Natively integrated with Meta Cloud API. Auto-dispatch LR copies, invoice payment links, and live tracking URLs to corporate clients.



## FASTag & Toll API

Connect directly with FASTag providers to pull toll deductions automatically into trip expenses, preventing driver cash manipulation.



## Complaint Helpdesk

A centralized ticketing portal where clients raise grievances. Assign tickets to specific departments and collect resolution satisfaction ratings.



## Vendor Purchase Invoices

Log spare parts and tyre purchases with proper GST classification. Automatically update warehouse inventory and credit vendor ledgers.



The Ultimate Digital Infrastructure for Modern Transport Companies.

## Ready to transform your operations?

Contact our enterprise sales team today for a comprehensive digital audit and a personalized live demonstration.

 **+918950008829**

 **support@cycodetech.in**

 **www.cycode.tech**

 **www.fleetlogic.in**